

A dynamic splash of clear water against a white background, with several droplets suspended in the air above the main splash.

Painkalac – AIDA Forum

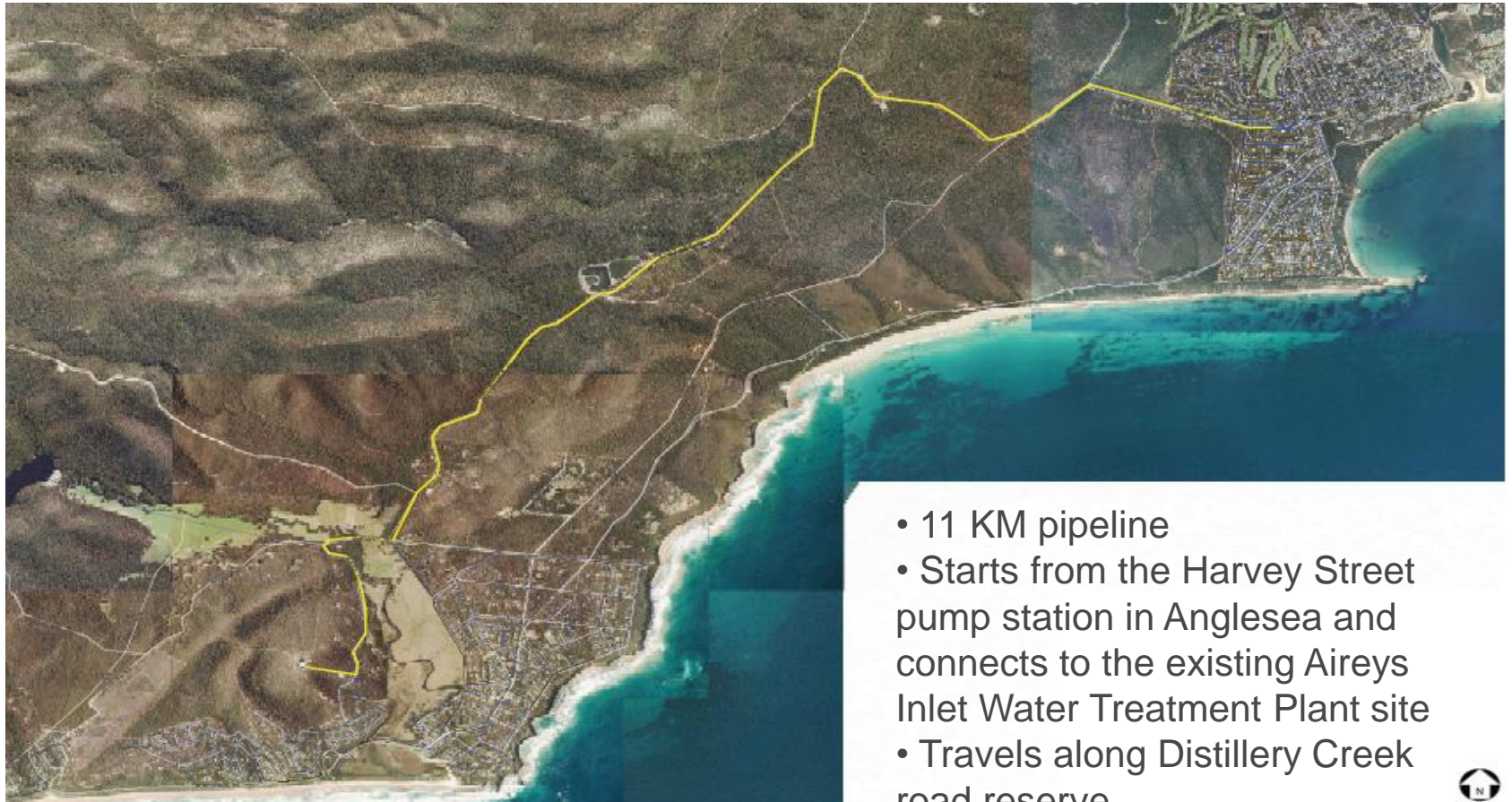


Water Supply Upgrade - Background



- **Current water supply is from the Painkalac Reservoir**
- **1500 connections consuming ~ 160ML/yr**
- **Treatment plant is reaching the end of its operational life**
- **Investigated two options for supply upgrade**
- **Treatment plant upgrade and pipeline**

Water Supply Upgrade – Pipeline Overview





Water Supply Upgrade – Project Status





Two Opportunities

Future
uses of the
reservoir

Future flow
regimes



Future uses - PRCAG



Painkalac Reservoir option assessment






Option: Shared Use Track and Picnic Facilities

What does the option look like? Where would the option be?

This option involves installation of a shared use track (walking, mtb and horses), viewing platforms and picnic tables around Painkalac Reservoir.

The option is outlined in the figure below:-



-  Existing 4wd track -- requires minor upgrade / clearing
-  New track
-  Boardwalk
-  Bridge
-  Picnic table

Who are some of the key stakeholders we need to engage with?

PRCAG members (including agencies and representative groups)
Aireys Inlet community

What are the planning / approval considerations?

Significant approvals would be required for the 'new track', bridge and boardwalk construction and installation. This process could take 12-24 months. Refer to attached report.



Future uses - PRCAG

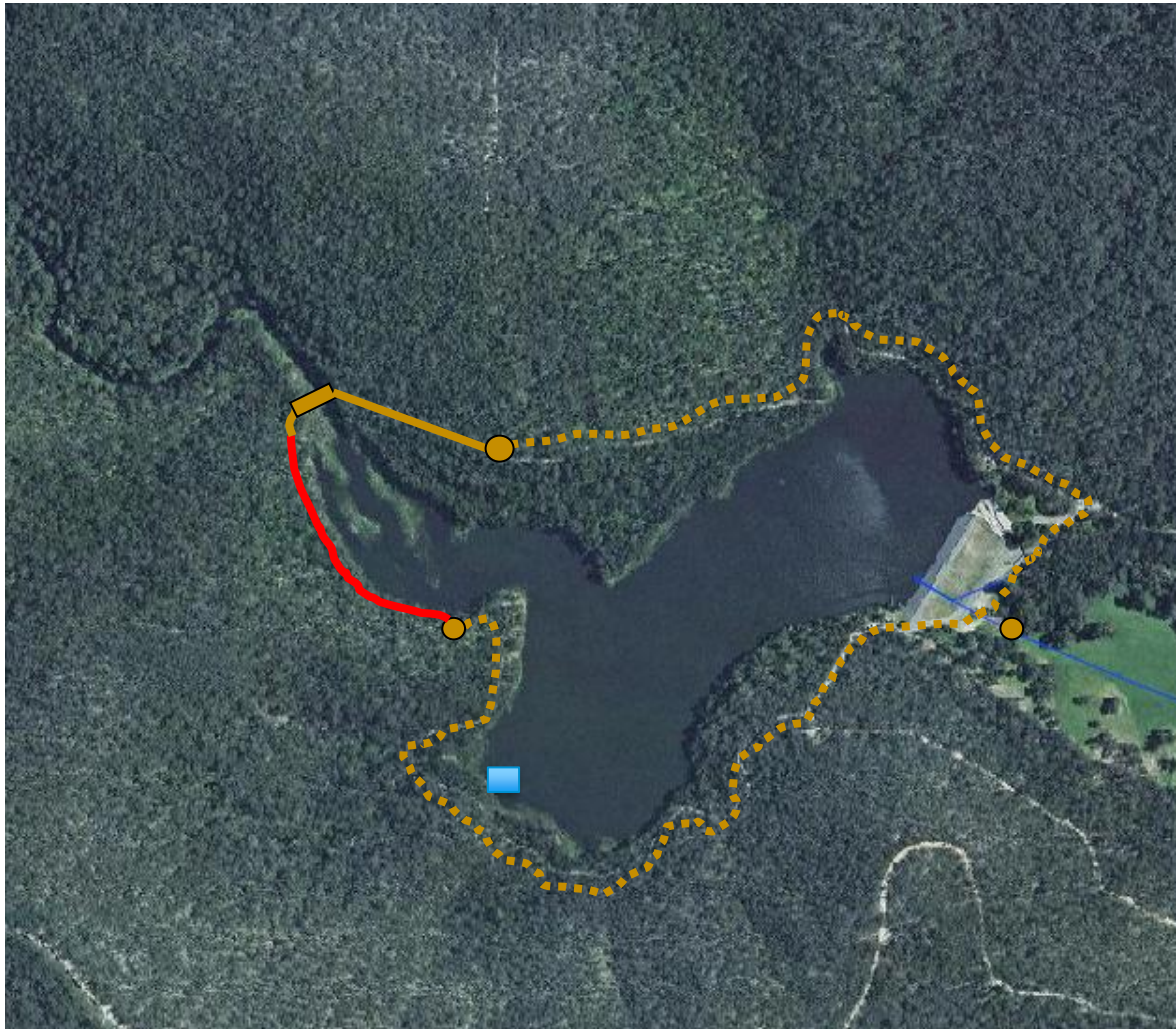


VISION

- low impact / active uses of the reservoir
- uses that engage with the natural beauty of the area and
- exploring potential educational opportunities.



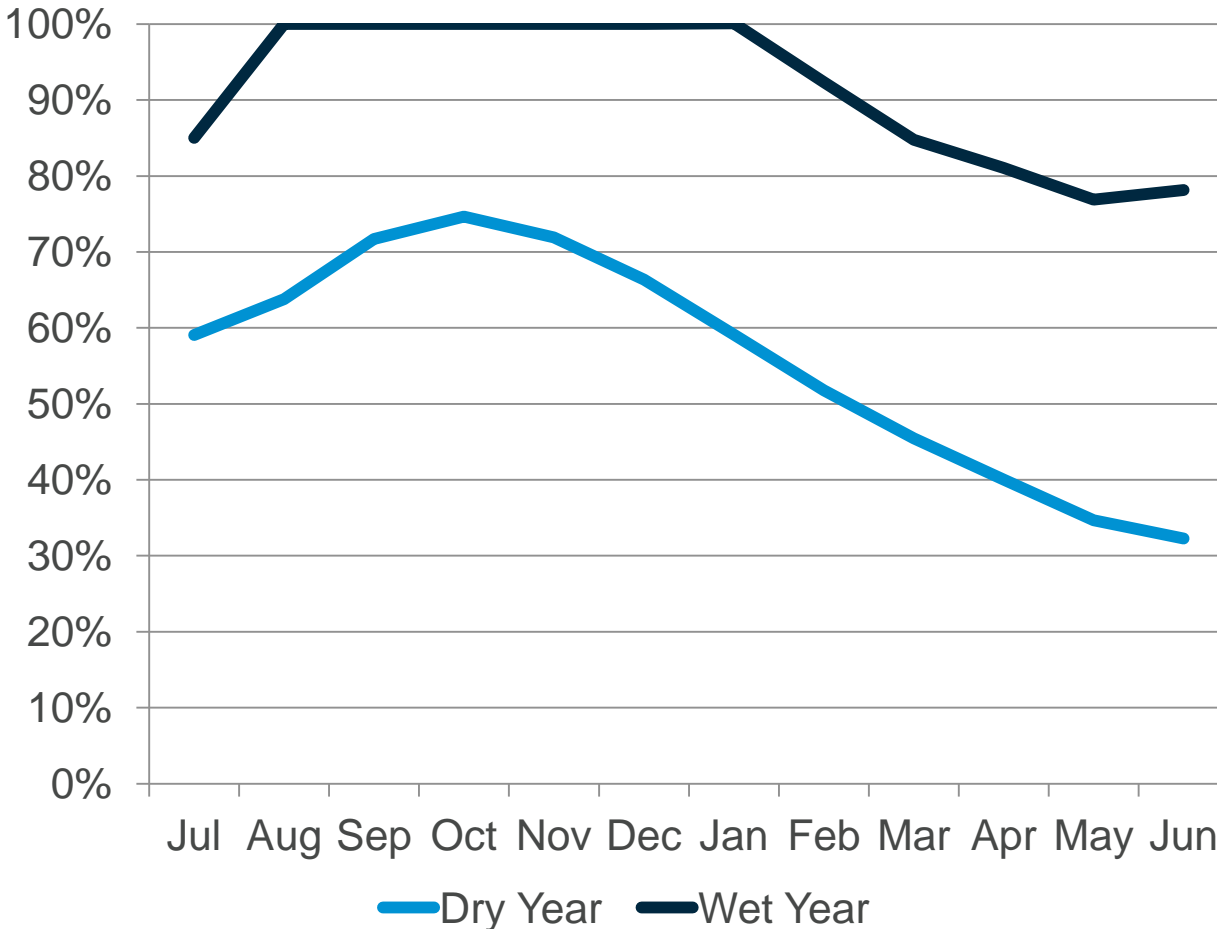
Future Uses





Future Flow Regime – Reservoir Overview

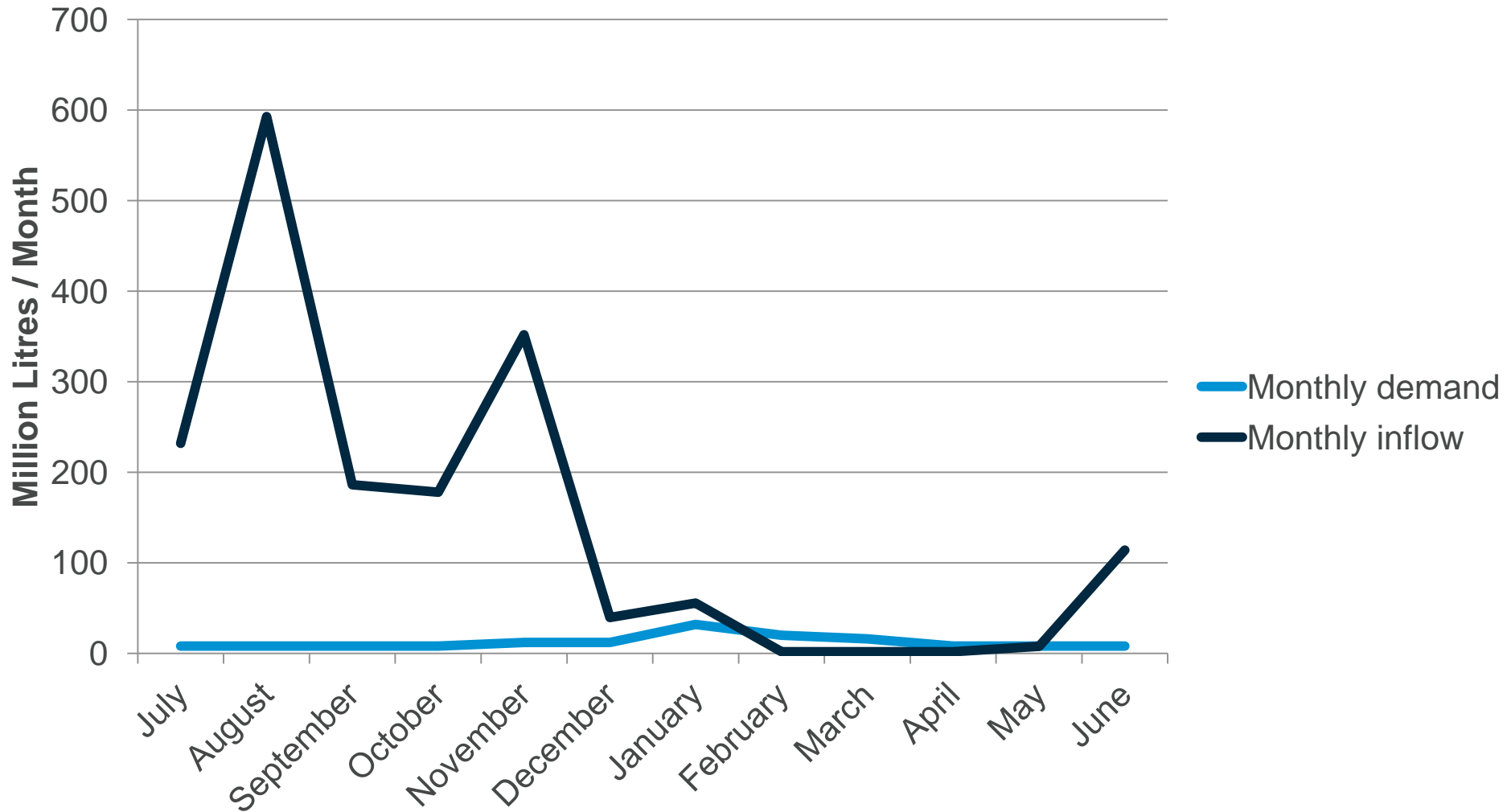
Painkalac Storage Level



- Reservoir capacity 532ML
- The reservoir aim to remain above 50% for dam safety reasons.
- The maximum outflow that can be released is 11ML/day.

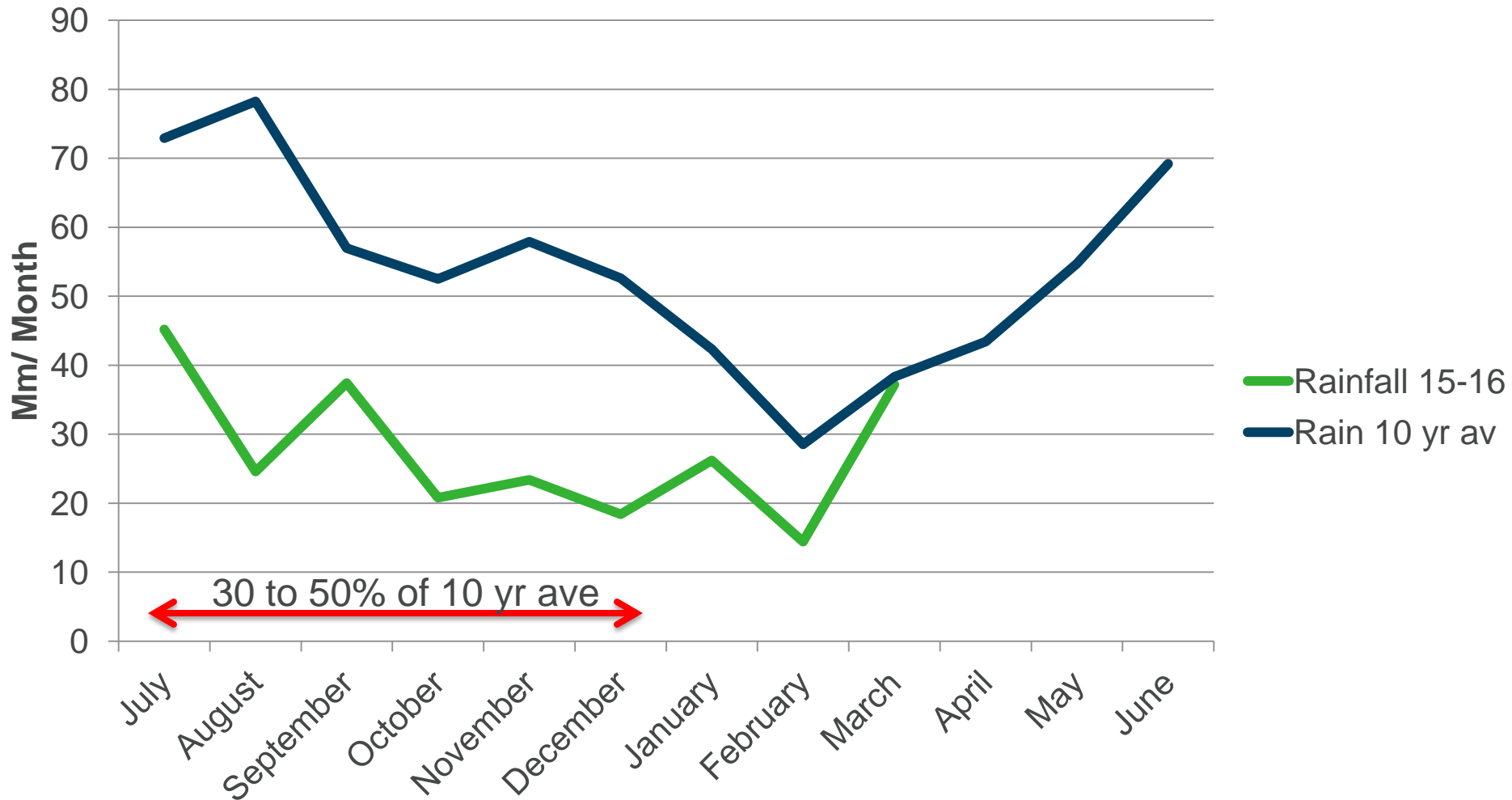


Inflow versus Demand



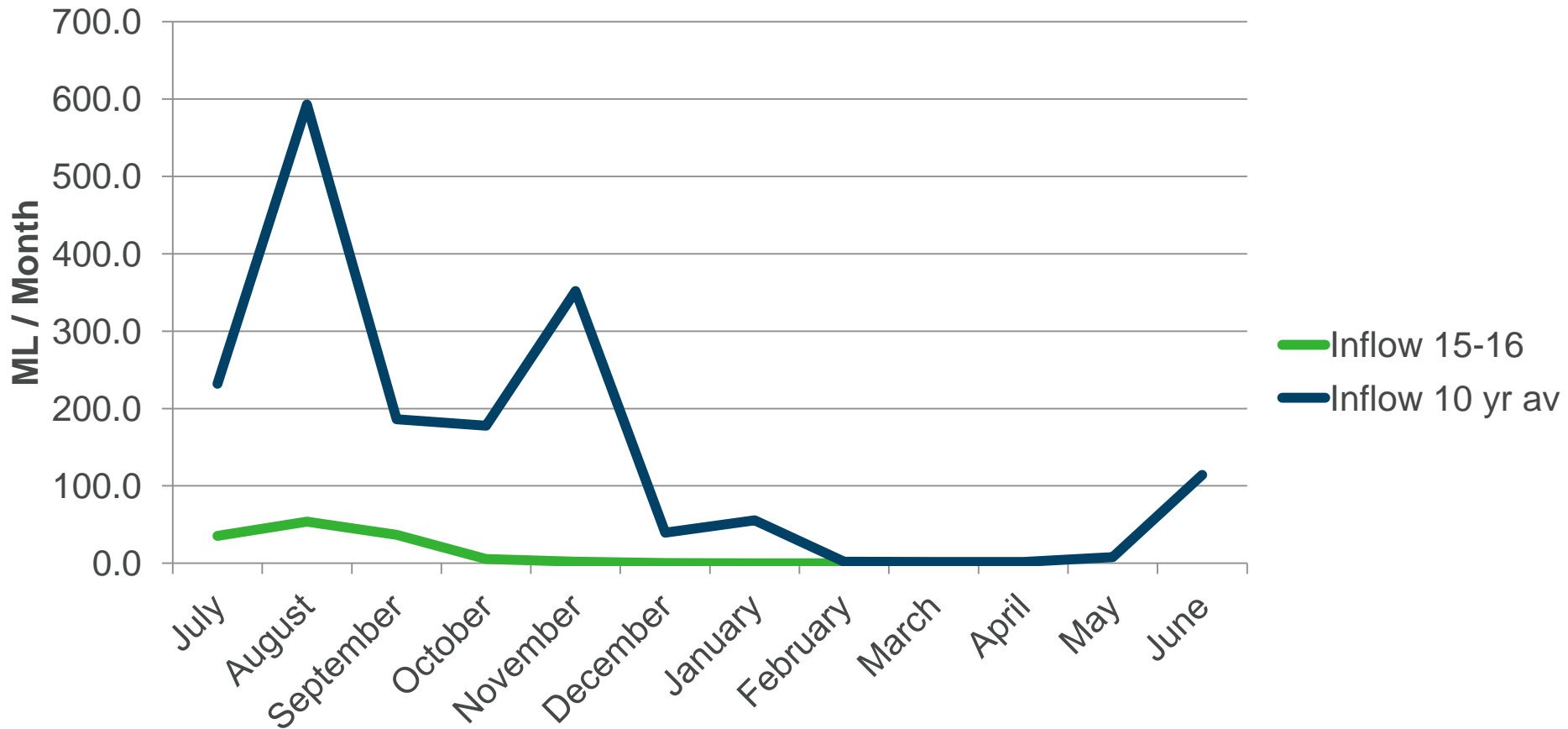


What is this year looking like? - Rainfall



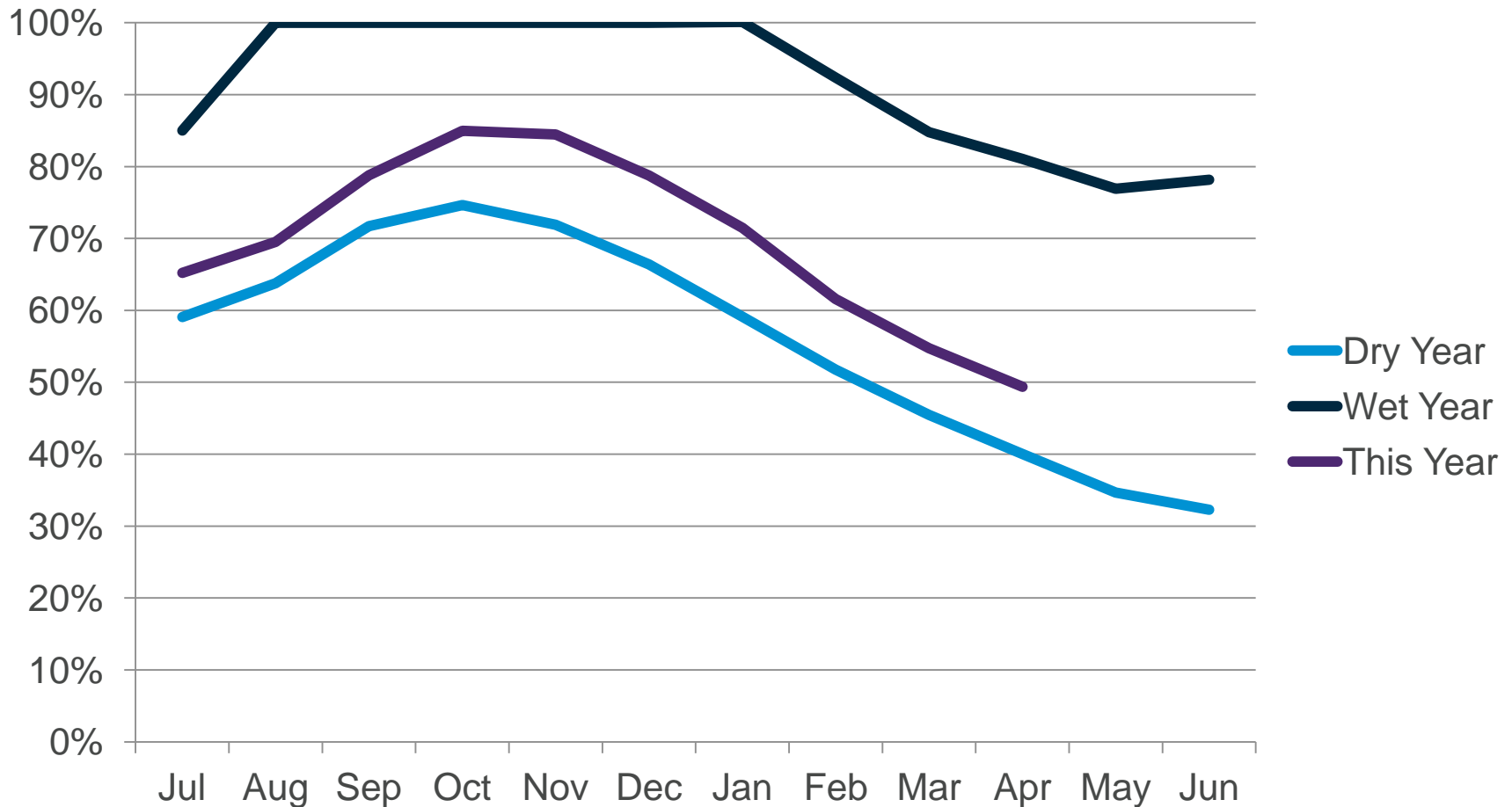


What is this year looking like? - Inflows





What is this year looking like? Storage Levels





Future Flow Regime

