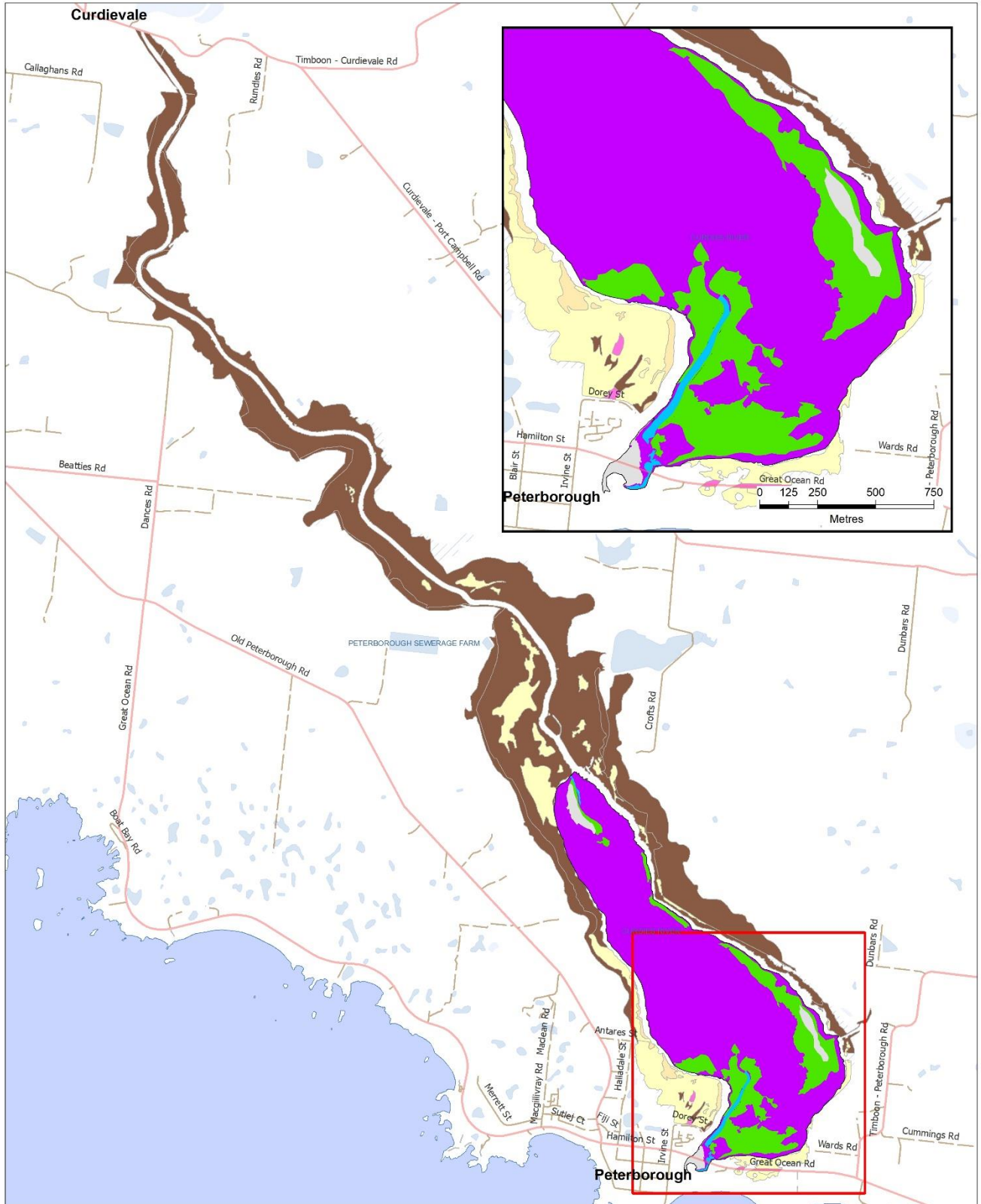


*Index of Estuary Condition 2021: Summary of fish information and vegetation maps for Corangamite*

Presence (+)/absence (0) of fish taxa captured in Corangamite estuaries during monitoring for Index of Estuary Condition 2021 (sampling between 2010 and 2019, using a combination of fyke netting and mesh netting, plus seine netting where feasible, in upper, middle and lower estuary in autumn). Common names of fish taxa are provided, with introduced taxa indicated by asterisk (\*). For a description of fish and vegetation monitoring methods and corresponding scientific names for fish refer to DELWP (2021) *Assessment of Victoria's estuaries using the Index of Estuary Condition: Background and Methods 2021*.

Common fish name	Curdies Inlet (22)	Campbell Creek (18)	Sherbrook River (78)	Gellibrand River (32)	Johanna River (38)	Aire River (2)	Barham River (8)	Kennett River (40)	St George River (84)	Erskine River (28)	Anglesea River (5)	Spring Creek (83)	Thompson Creek (91)	Barwon River (9)	Hovells Creek (36)
Australian Smelt	+	0	0	0	0	+	0	0	0	0	0	0	0	0	0
Black Bream	+	+	+	+	0	+	+	+	+	+	+	+	+	+	+
Bridled Goby	0	0	0	0	0	0	0	0	0	0	0	0	+	0	+
Brown Trout*	0	0	0	0	+	0	+	0	0	0	0	0	0	0	0
Cobbler	0	0	0	0	0	0	0	0	0	0	0	0	0	0	+
Common Galaxias	+	0	+	+	+	+	+	+	+	0	0	+	0	+	0
Eastern Australian Salmon	0	0	0	0	0	0	+	0	+	+	0	0	0	+	0
Eastern Bluespot Goby	+	0	+	0	0	+	+	0	+	+	+	+	+	+	+
Estuary Perch	+	0	0	+	0	0	+	0	0	0	0	0	0	+	0
European Carp*	0	0	0	0	0	0	0	0	0	0	0	0	0	+	0
Flatfish spp.	0	0	+	0	0	0	0	0	0	0	0	0	0	0	0
Flathead Gudgeon	+	+	+	+	0	+	+	+	+	+	+	+	+	+	+
Glass Goby	0	0	0	0	0	+	0	0	0	0	0	0	0	0	0
Goldspot Mullet	0	0	0	0	0	0	0	0	0	0	0	+	0	0	0
Greenback Flounder	+	0	0	0	0	0	+	0	0	0	0	0	0	0	0
Half Bridled Goby	0	0	0	0	0	0	0	0	0	0	0	0	0	0	+
King George Whiting	0	0	0	0	0	0	0	0	0	0	0	0	0	0	+
Lagoon Goby	+	0	0	0	0	0	0	0	0	0	0	0	0	0	0
Little Weed Whiting	0	0	0	0	0	0	0	0	0	0	0	0	0	0	+
Longsnout flounder	0	0	+	0	0	0	0	+	+	+	0	0	+	+	0
Luderick	0	0	0	0	0	0	0	0	+	0	0	0	+	0	0
Old Wife	0	0	0	0	0	0	0	0	0	0	0	0	0	+	0
Pikehead Hardyhead	0	0	0	0	0	0	0	0	0	0	0	0	0	0	+
Pipefish sp.	0	0	0	0	0	0	0	0	0	0	0	0	0	0	+
Port Phillip Pipefish	0	0	0	0	0	0	0	0	0	0	0	0	0	0	+
Sandy Sprat	0	0	0	0	0	0	0	0	0	0	0	0	0	+	0
Sea Mullet	0	+	0	0	0	0	0	0	0	0	0	0	0	+	0
Shortfinned Eel	+	+	+	0	0	+	0	0	0	0	+	+	+	0	+
Silver Trevally	+	0	0	0	0	0	0	0	0	0	0	0	0	+	0
Smallmouth Hardyhead	+	0	0	0	0	0	0	0	0	0	0	+	+	+	+
Smooth Toadfish	0	0	0	0	0	0	0	0	+	0	0	0	+	+	+
Southern Longfin Goby	0	0	0	0	0	0	0	0	0	0	0	0	+	0	0
Southern Sea Garfish	0	0	0	0	0	0	0	0	0	0	0	0	0	+	0
Spotted Galaxias	0	0	0	0	0	+	0	0	0	0	0	0	0	0	0
Spotted Pipefish	0	0	0	0	0	0	0	0	0	0	0	0	0	0	+
Tamar River Goby	0	+	+	+	0	+	+	0	+	0	0	0	+	0	+
Tommy Ruff	0	0	0	0	0	0	+	0	0	0	0	0	0	0	0
Tupong	0	0	0	+	0	0	+	0	+	+	0	0	+	+	0
Western Australian Salmon	+	+	0	0	0	+	0	+	0	+	+	0	+	+	0
Widebody Pipefish	0	0	0	0	0	0	0	0	0	0	0	0	0	0	+
Wood's Siphonfish	0	0	0	0	0	0	0	0	0	0	0	0	0	0	+
Yank Flathead	+	0	0	0	0	0	0	0	0	0	0	0	0	0	0
Yelloweye Mullet	+	+	+	+	0	+	+	+	+	+	+	+	+	+	+

### Curdies Inlet



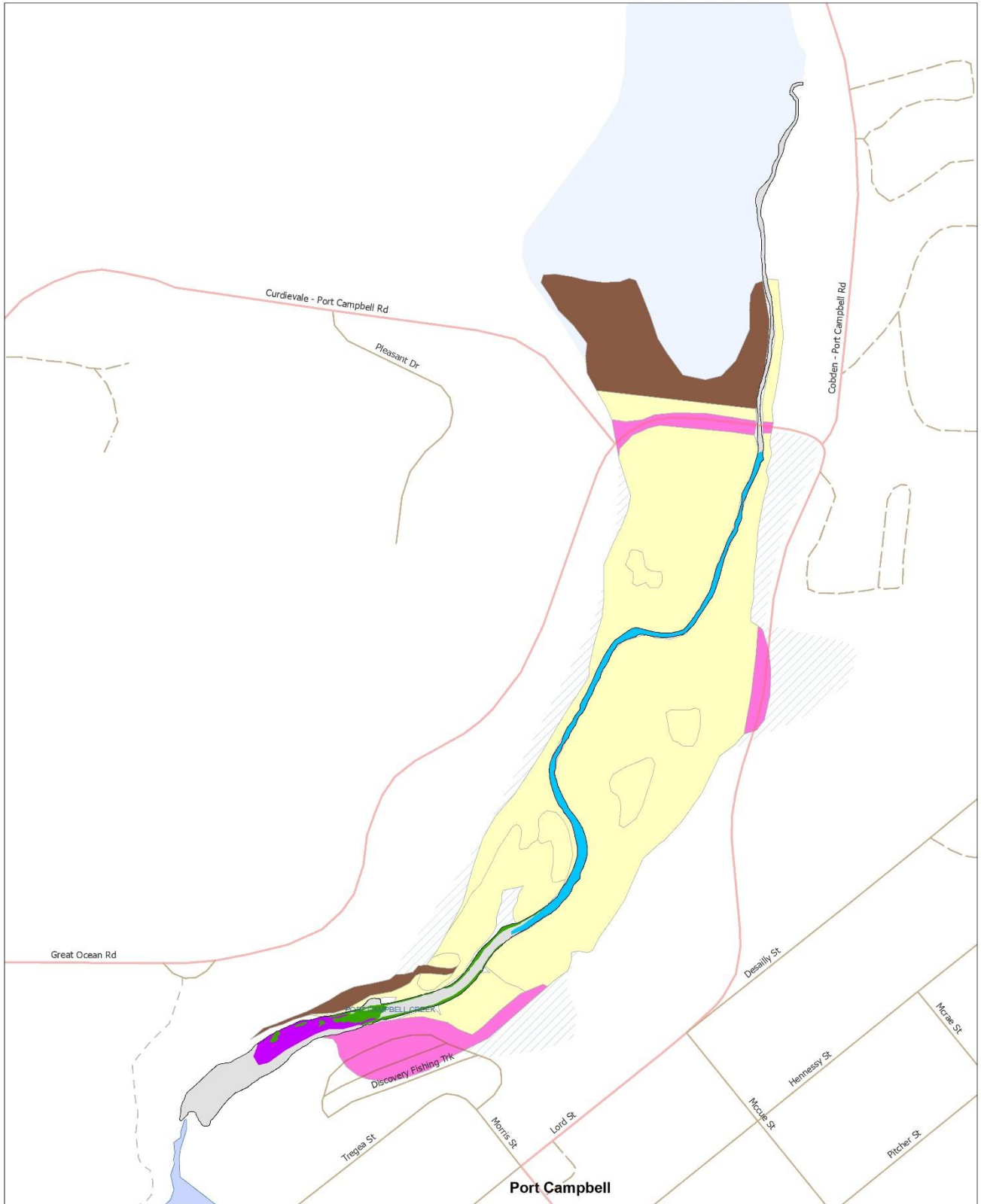
Submerged Vegetation		Vegetation Natiiveness		Other Features	
Light Blue	Bare ground	Light Yellow	0 - 0.5 % exotic	Blue	Permanent Waterbody
Dark Blue	Channel >2m	Yellow	0.5 - 1	Light Blue	Subject to Inundation
Green	Seagrass	Orange	1 - 5	Light Green	Wetland Area
Light Green	Seagrass/Macroalgae	Brown	5 - 25	Grey	Coastline
Purple	Macroalgae	Dark Brown	25 - 100 % exotic	Dashed Grey	State Border
Orange	Macrophytes	Pink	Built		
Black	estuary boundary or unmapped region				

0 0.225 0.45 0.9 1.35  
Kilometres

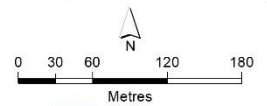
**VICTORIA**  
State Government  
Environment, Land, Water and Planning

Map produced by ARI January 2020  
Copyright © The State of Victoria,  
Department of Environment, Land, Water and Planning, 2020

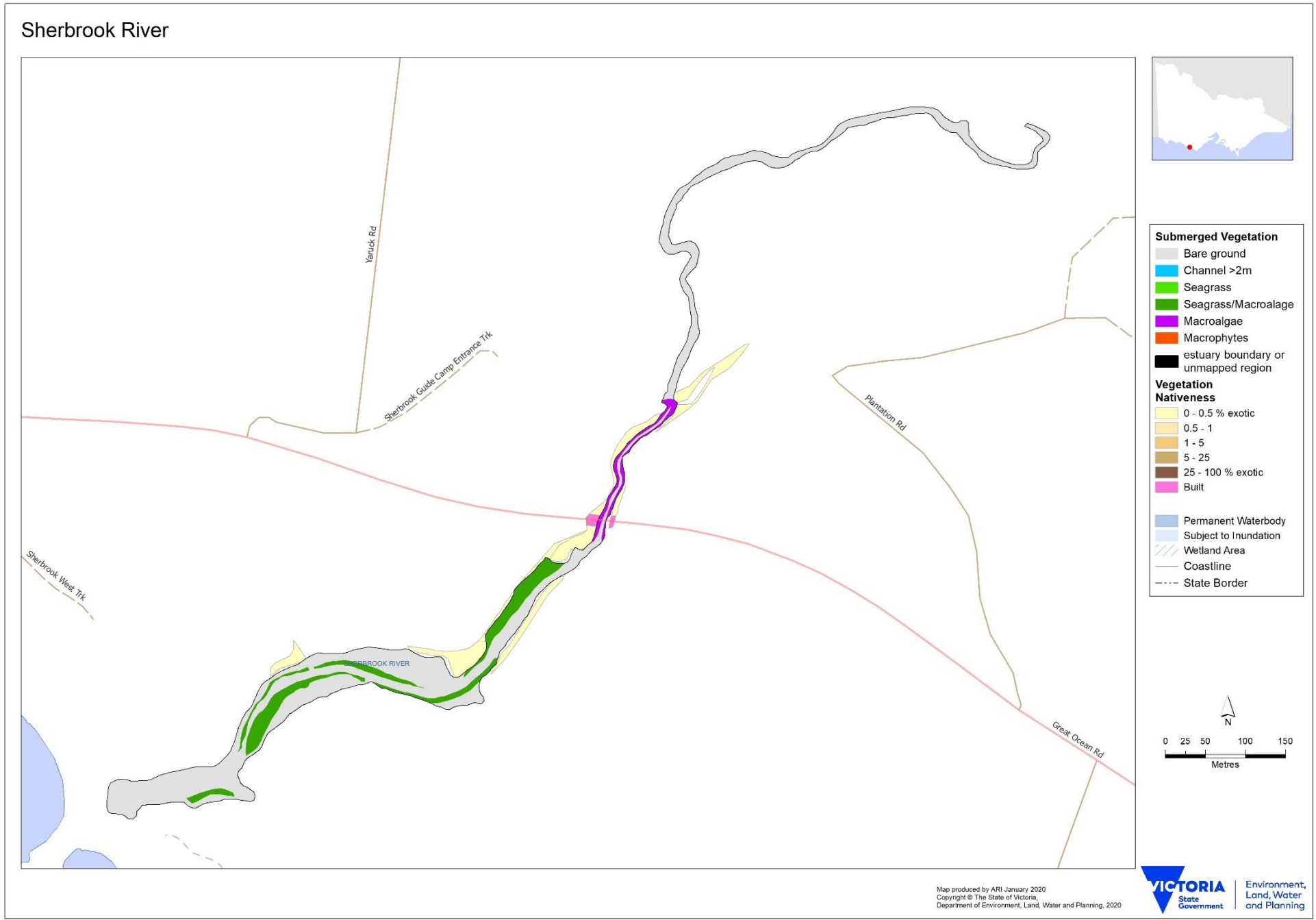
### Campbell Creek



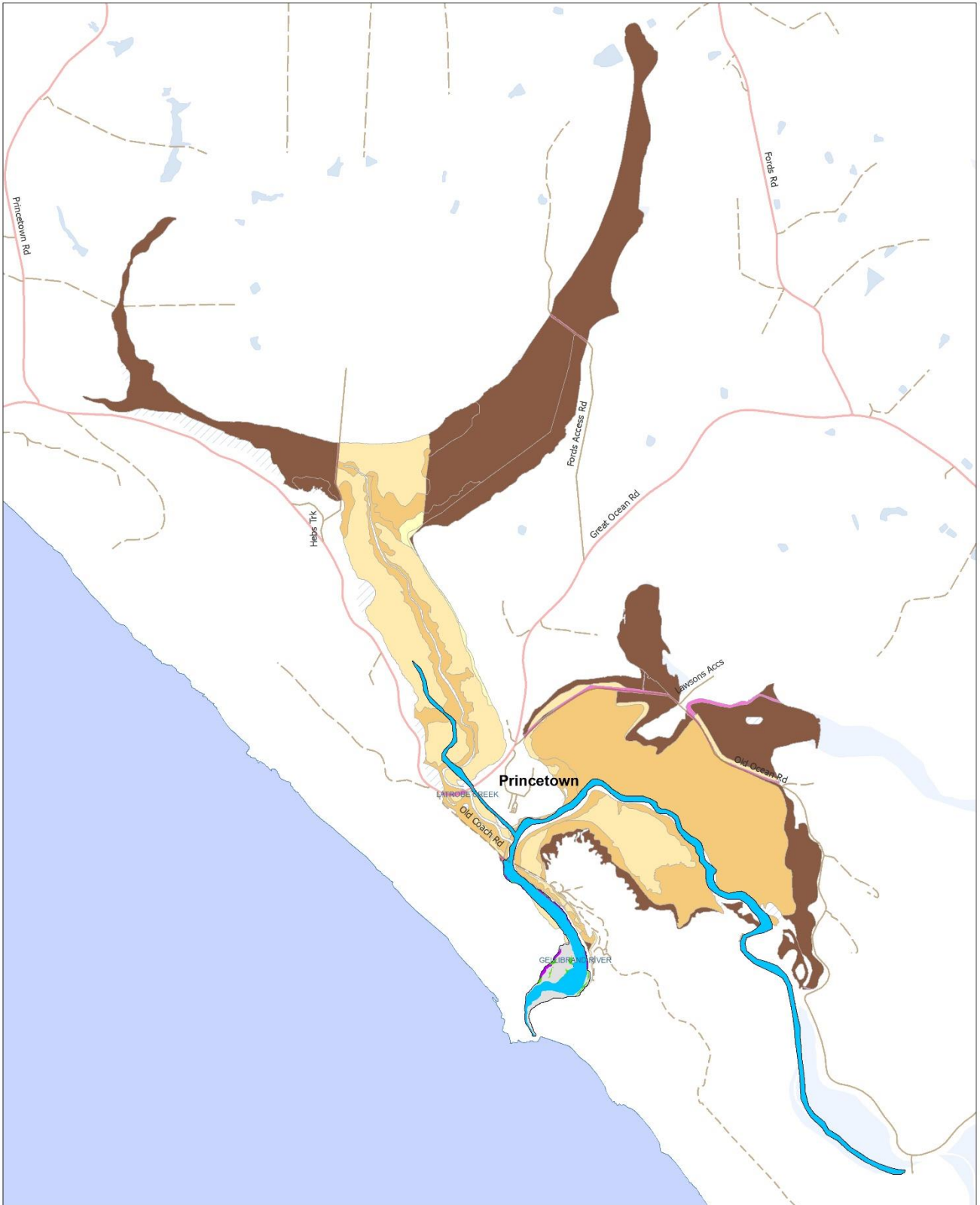
Submerged Vegetation		Vegetation Nativeness		Other Features	
Grey	Bare ground	Light yellow	0 - 0.5 % exotic	Blue	Permanent Waterbody
Blue	Channel >2m	Yellow	0.5 - 1	Light blue	Subject to Inundation
Green	Seagrass	Orange	1 - 5	Diagonal lines	Wetland Area
Light green	Seagrass/Macroalage	Brown	5 - 25	Blue line	Coastline
Purple	Macroalgae	Dark brown	25 - 100 % exotic	Dashed line	State Border
Orange	Macrophytes	Pink	Built		
Black	estuary boundary or unmapped region				



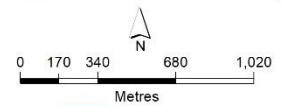
**VICTORIA** State Government  
 Environment, Land, Water and Planning  
 Map produced by ARI January 2020  
 Copyright © The State of Victoria,  
 Department of Environment, Land, Water and Planning, 2020



### Gellibrand River



Submerged Vegetation	Vegetation Nativeness	Waterbody/Other
Bare ground	0 - 0.5 % exotic	Permanent Waterbody
Channel >2m	0.5 - 1	Subject to Inundation
Seagrass	1 - 5	Wetland Area
Seagrass/Macroalage	5 - 25	Coastline
Macroalgae	25 - 100 % exotic	State Border
Macrophytes	Built	
estuary boundary or unmapped region		




**VICTORIA**  
 State Government  
 Environment, Land, Water and Planning  
 Map produced by ARI January 2020  
 Copyright © The State of Victoria,  
 Department of Environment, Land, Water and Planning, 2020

### Johanna River



**Submerged Vegetation**

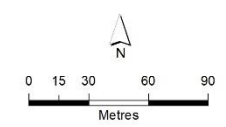
- Bare ground
- Channel >2m
- Seagrass
- Seagrass/Macroalgae
- Macroalgae
- Macrophytes
- estuary boundary or unmapped region

**Vegetation Nativeness**

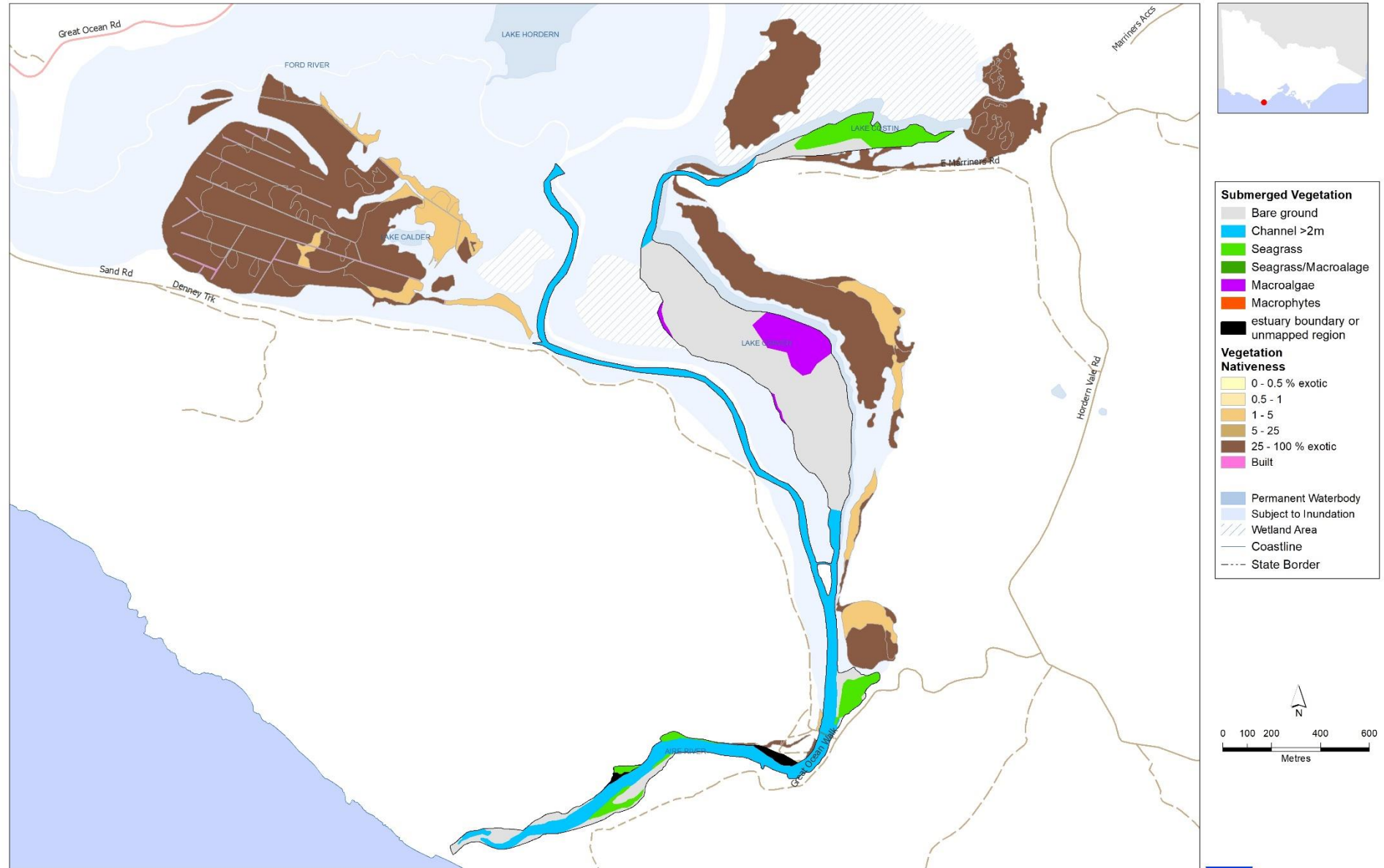
- 0 - 0.5 % exotic
- 0.5 - 1
- 1 - 5
- 5 - 25
- 25 - 100 % exotic
- Built

**Other Features**

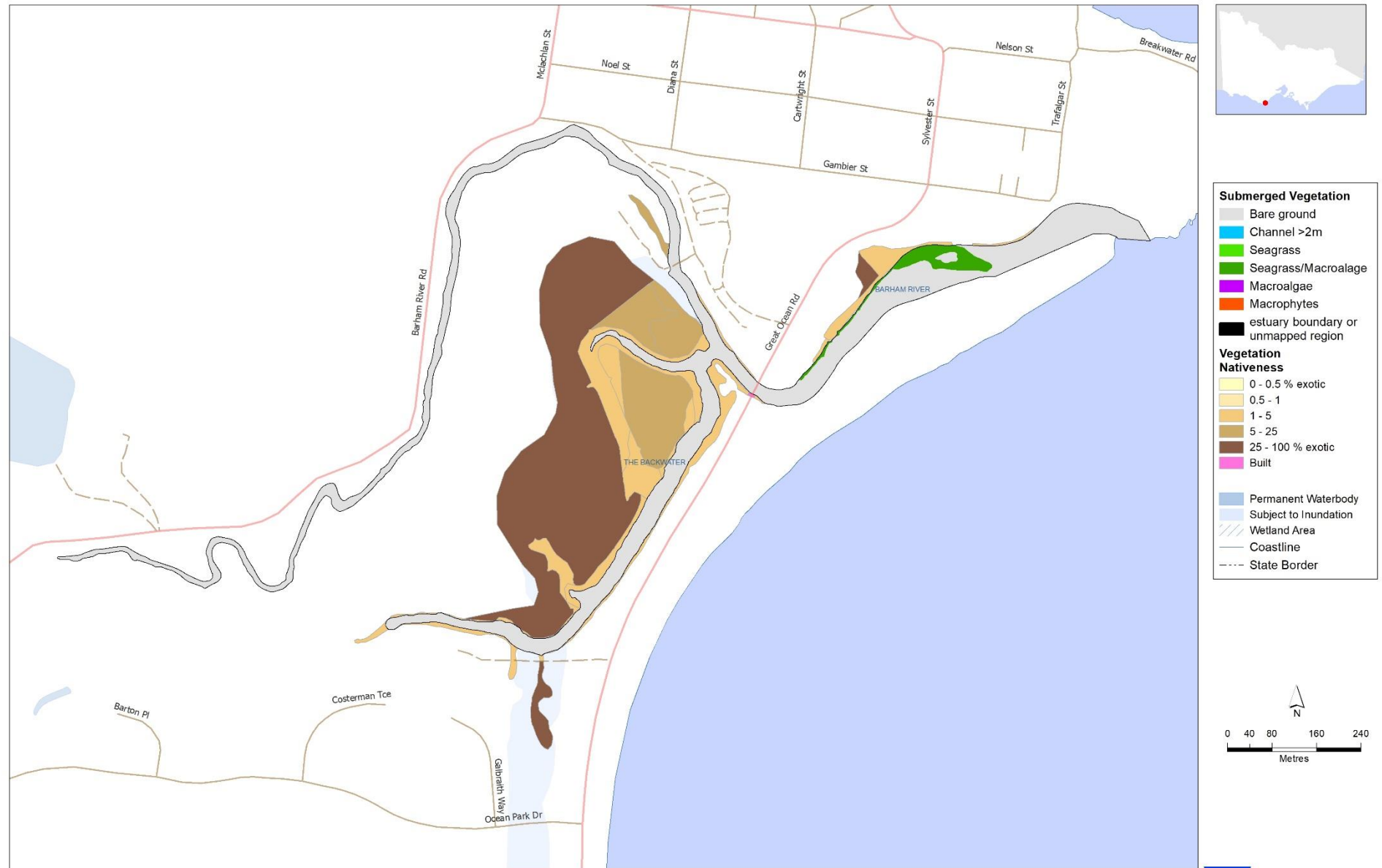
- Permanent Waterbody
- Subject to Inundation
- Wetland Area
- Coastline
- State Border



## Aire River



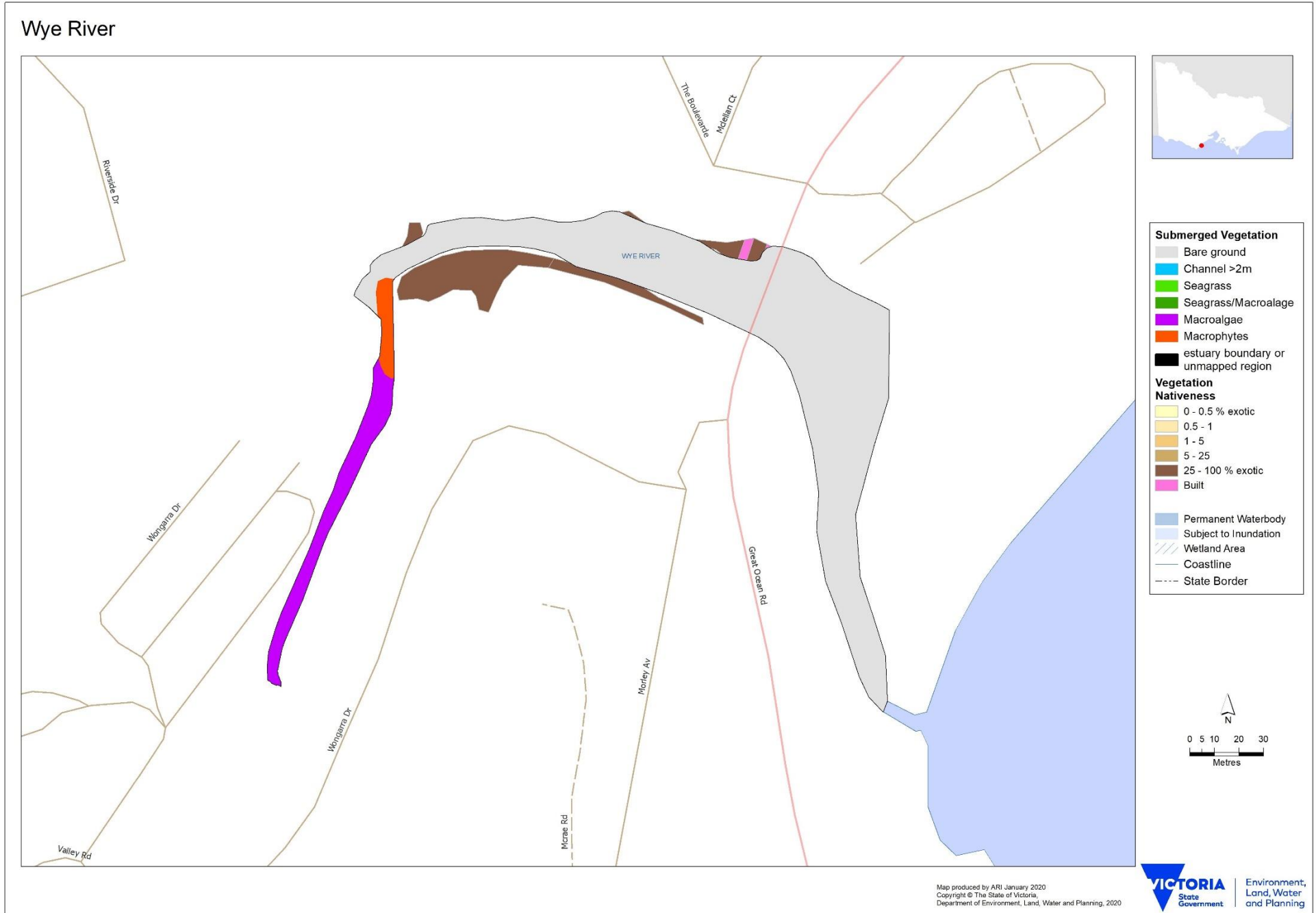
## Barham River





## Kennett River

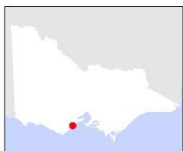




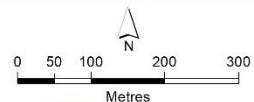




### Painkalac Creek

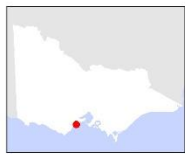
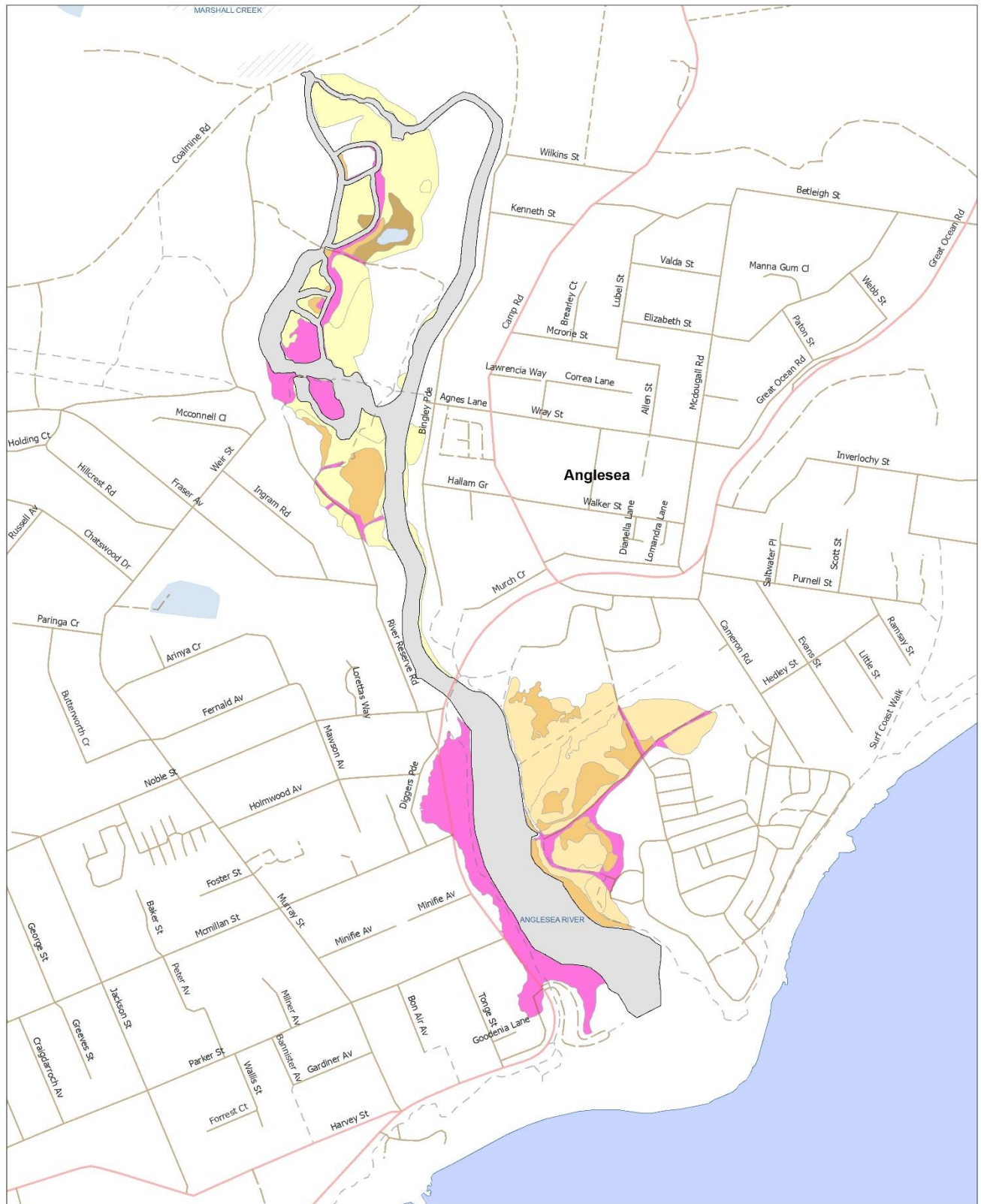


Submerged Vegetation		Vegetation Nativeness		Permanent Waterbody	
[Grey]	Bare ground	[Light Yellow]	0 - 0.5 % exotic	[Blue]	Permanent Waterbody
[Blue]	Channel >2m	[Yellow]	0.5 - 1	[Light Blue]	Subject to Inundation
[Green]	Seagrass	[Orange]	1 - 5	[Hatched]	Wetland Area
[Light Green]	Seagrass/Macroalgae	[Brown]	5 - 25	[Dashed]	Coastline
[Purple]	Macroalgae	[Dark Brown]	25 - 100 % exotic	[Dotted]	State Border
[Pink]	Macrophytes	[Pink]	Built		
[Black]	estuary boundary or unmapped region				



**VICTORIA** State Government  
 Environment, Land, Water and Planning  
 Map produced by ARI January 2020  
 Copyright © The State of Victoria, Department of Environment, Land, Water and Planning, 2020

### Anglesea River



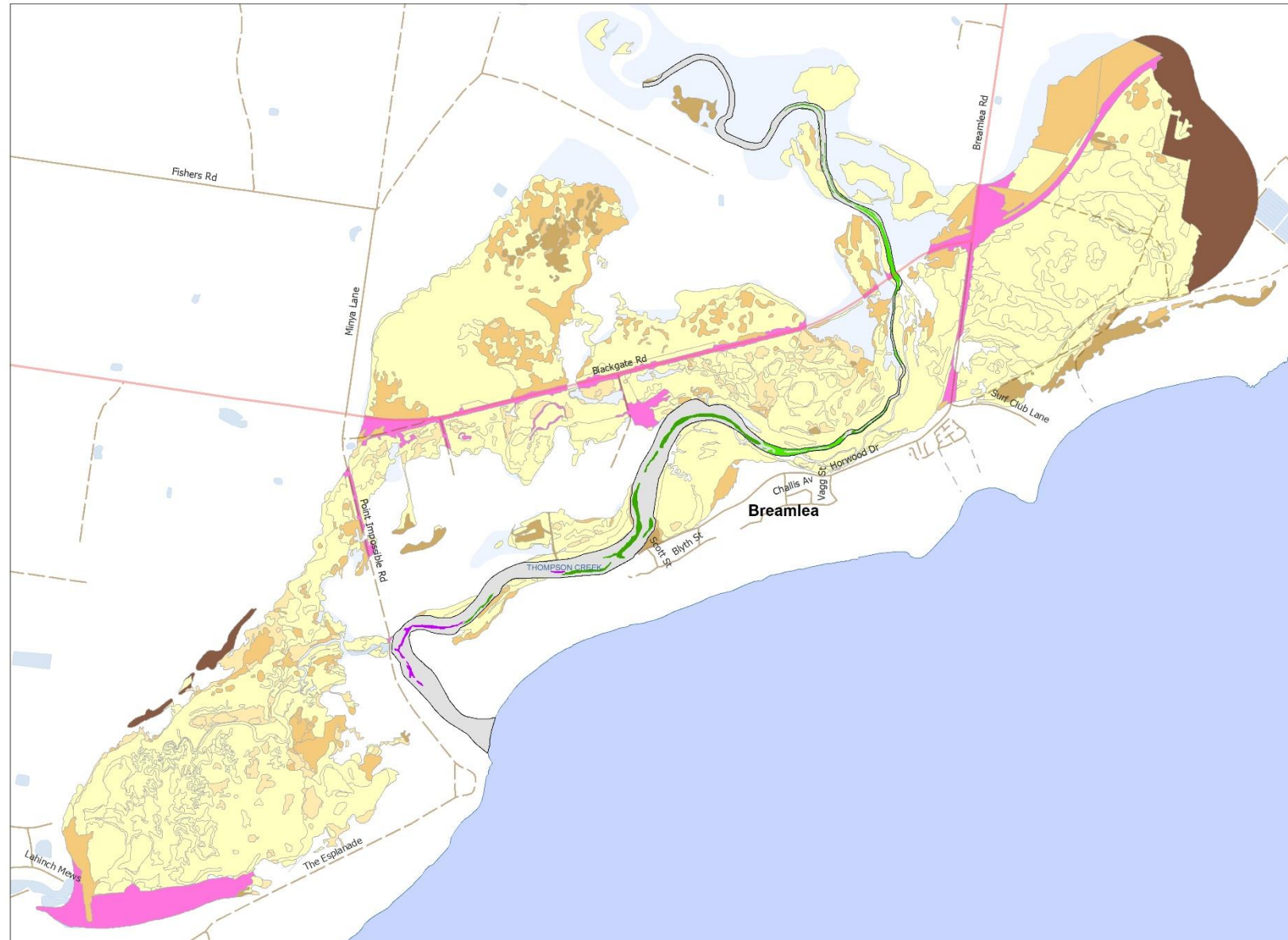
Submerged Vegetation	Vegetation Nativeness	Permanent Waterbody
Bare ground	0 - 0.5 % exotic	Subject to Inundation
Channel >2m	0.5 - 1	Wetland Area
Seagrass	1 - 5	Coastline
Seagrass/Macroalgae	5 - 25	State Border
Macroalgae	25 - 100 % exotic	
Macrophytes	Built	
estuary boundary or unmapped region		

0 55 110 220 330  
Metres

Map produced by ARI January 2020  
Copyright © The State of Victoria,  
Department of Environment, Land, Water and Planning, 2020



### Thompson Creek



**Submerged Vegetation**

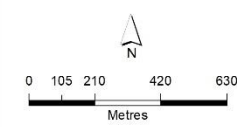
- Bare ground
- Channel >2m
- Seagrass
- Seagrass/Macroalage
- Macroalgae
- Macrophytes
- estuary boundary or unmapped region

**Vegetation Nativeness**

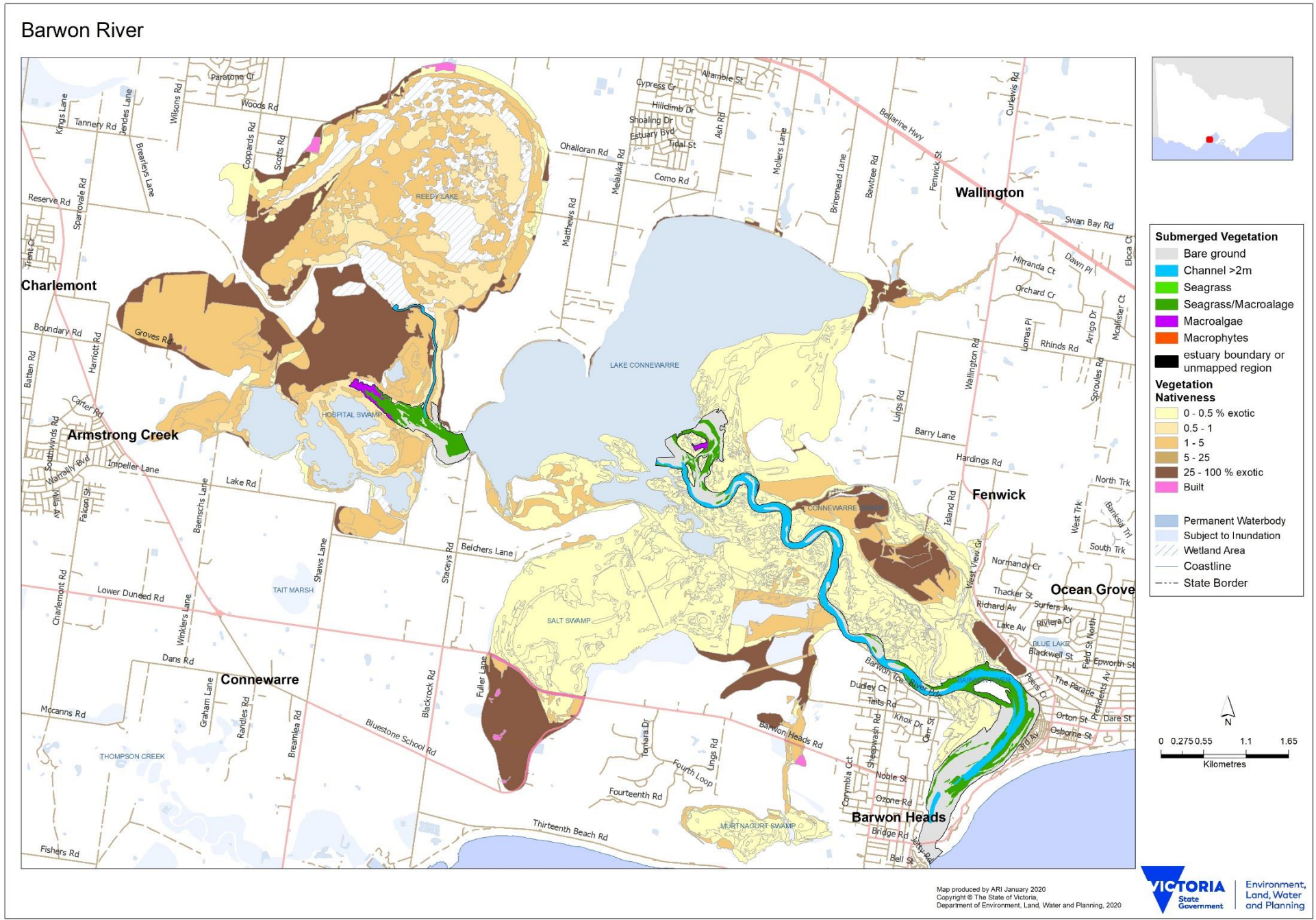
- 0 - 0.5 % exotic
- 0.5 - 1
- 1 - 5
- 5 - 25
- 25 - 100 % exotic
- Built

**Other Features**

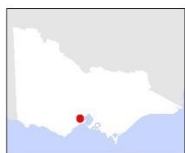
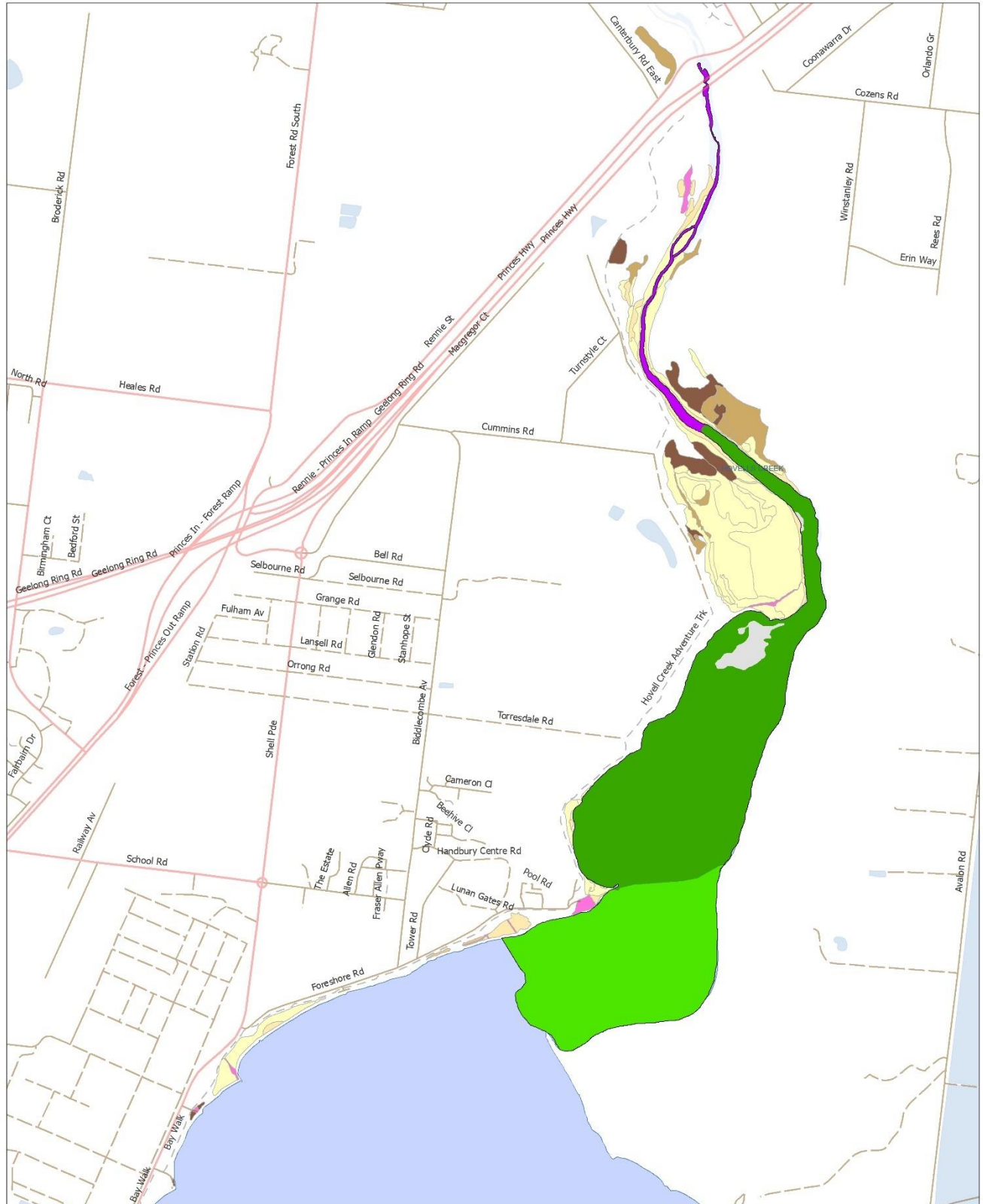
- Permanent Waterbody
- Subject to Inundation
- Wetland Area
- Coastline
- State Border







### Limeburners Lagoon



Submerged Vegetation	Vegetation Nativeness	Waterbody
Bare ground	0 - 0.5 % exotic	Permanent Waterbody
Channel >2m	0.5 - 1	Subject to Inundation
Seagrass	1 - 5	Wetland Area
Seagrass/Macroalage	5 - 25	Coastline
Macroalgae	25 - 100 % exotic	State Border
Macrophytes	Built	
estuary boundary or unmapped region		

0 125 250 500 750  
Metres

**VICTORIA** State Government  
Environment, Land, Water and Planning

Map produced by ARI January 2020  
Copyright © The State of Victoria,  
Department of Environment, Land, Water and Planning, 2020